

IMPACT® CTMS

MSP Two-Way Link

MSP2 is our two-way link that makes the planning and resourcing capabilities of Microsoft Project available to the copy-down/roll-up processing of IMPACT® Progress. Unlike a conventional use of MSP, the link retains all data in IMPACT's Oracle database, meaning that security and accessibility of the data are optimized.

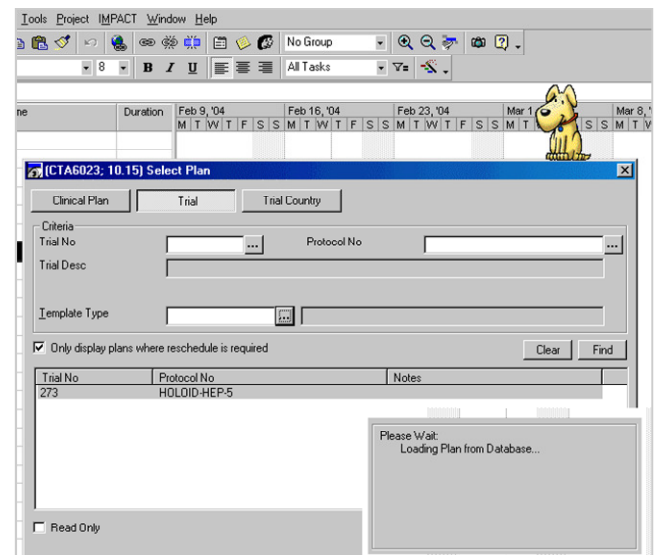
Benefit from Experience

In the initial planning of a study, milestones and timelines have to be set. The personal experience of a trial manager will help gauge how long pre-trial activities will take, but a more accurate picture can be provided by historic metrics on similar studies. For this, IMPACT Progress stores three planned dates—two baselines and the latest plan—to assess the most realistic time intervals between key events. These metrics can be used to define realistic durations in standard Microsoft Project templates, containing the various tasks, dependencies, durations, notes and generically assigned resources.

This project plan can then be imported into IMPACT as a standard template for use with scheduling studies, study countries or clinical plans. The majority of activities will be linked to standard IMPACT events, in order to update their planned dates automatically; however many other activities can be added, specific to that particular type of study or relevant only to a particular country's regulatory documentation needs. Any number of templates can be stored at all three levels.

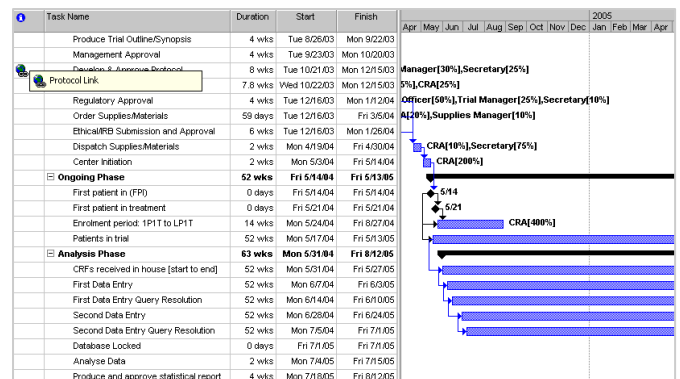
Flexibility

Once a template is saved in IMPACT, it can be applied to a study (or project or country as appropriate). On a case-by-case basis, new activities can be added that are specific to the study concerned; alternatively, superfluous tasks can be deleted. New resource allocations, notes and hyperlinks can be incorporated.



Reacting to Reality

When the clinical plan, trial or trial country is underway, actual dates will be recorded – rolling up from site level, imported from another system, or entered directly. Any late events that will lead to the overall project being delayed will trigger an alert that the plan needs rescheduling. Then the MSP 2-way link can be used to refine and update the planned dates, re-baselining as needed.



IMPACT® CTMS

Furthermore, because countries can plan separately with or without the use of the MSP 2-way link, amending resources in the countries' own MSP plans—adding sites or monitors—they can then update the timelines in IMPACT Progress. As all can access IMPACT Progress and the MSP 2-way link, all can collaborate to hit the key milestones.

Database Stability

Microsoft Project's ability to store hyperlinks, notes and resourcing information can be exploited as all data is stored in the IMPACT Oracle database. This not only makes ad hoc reporting easier, but it also enables cross-continent collaboration on study Gantt charts without confusion of files and accidental overwrites.

Perceptive at a Glance

Perceptive Informatics brings together exceptional clinical knowledge, experience and leading-edge technology. As the industry's leading eClinical solutions provider, we combine these qualities into a portfolio of business support applications and complementary services that optimize the process of product development and commercialization. Our customers are forward-thinking pharmaceutical, biotechnology and medical device companies, CROs and associated service providers.

Our versatile, comprehensive eClinical suite is built upon six areas, each of which makes extensive use of innovative technology:

**ClinPhone RTSM ▪ Imaging ▪ CTMS
EDC ▪ ePRO ▪ Solutions**

Each element of our eClinical suite is designed to deliver practical and tangible results—decreasing the time, cost and risk associated with the development and launching of new products.

It is reassuring to know that our professionals have a combined clinical and technology background. This means that our products and services accommodate the needs of the regulated world (such as computer system validation and 21 CFR Part 11).

Our tried and tested solutions are used by many of the world's leading pharmaceutical companies.

To learn more about how our solutions can help you, please contact us at info@perceptive.com.