

Introducing ClinPhone Pro

ClinPhone Pro supports Vendor Managers with:

- **Accelerated performance** - agile architecture enables rapid development, keeping pace with industry-leading advancements.
- **Efficiency for Study Teams** - quick and effortless set-up, with early system demos and pre-validated libraries tailored to your agreed standards, reducing input and review time.
- **Streamlined study management** - instant visibility into enrolment progress, study status, and data change history for easy status reporting, audits, and data analysis.
- **Built-in flexibility** - self-service tools allow teams to quickly respond to changing needs without unnecessary scope changes.
- **Site-friendly design** - intuitive interface enhances efficiency and data accuracy with guided visit registration, real-time validation, and calendar views of treatment visits.



Book a demo of this future-proof RTSM solution

Introducing ClinPhone Pro

30+ years of IRT expertise - delivering secure, reliable, and precise randomization and trial supply management.

A future-proof IRT solution enabled by clever architecture and a trusted industry cloud for fast, scalable, and resilient development.

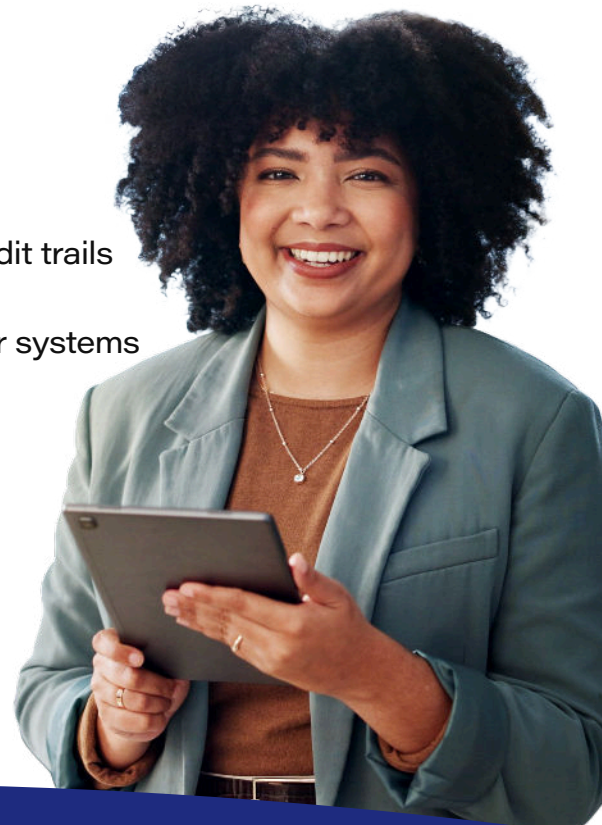
Confidence that the right participant gets the right treatment at the right time - every time, plus:

- ▶ Rapid study build
- ▶ Effortless set-up with study demos from day 1
- ▶ Configurable design tailored to your study, Therapeutic Area, and Phase
- ▶ 1-click study design using pre-validated templates
- ▶ Self-service for instant study design changes
- ▶ Intuitive, user-friendly interface
- ▶ On-demand reporting from status and dashboards to audit trails
- ▶ Seamless system integration with supply, EDC and other systems

Expert support - from RTSM specialists, to an 24/7 in-house helpdesk.

Committed to sustainability and on-time data submission, with 500+ regulatory approvals.

Your trusted ally - from day one to database lock.



Book a demo of this future-proof RTSM solution