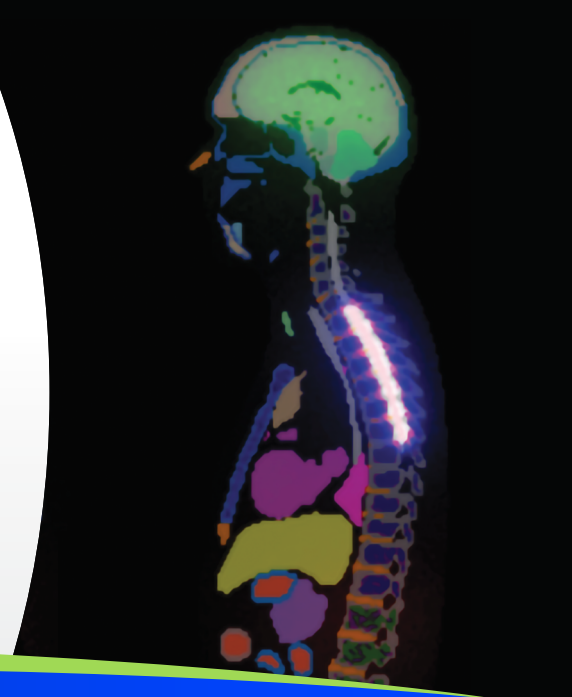


Clinical Radiopharmaceutical Services



In a field where precision is everything, the cost of inexperience is high. Missteps in isotope selection, imaging protocols, or dosimetry strategy can derail timelines, compromise data integrity, and put patient safety at risk.

That's why 80% of sponsors trust Perceptive: we bring the scientific rigor, operational depth, and regulatory foresight needed to de-risk your RLT program — end to end.

Our expertise includes:

- ▶ Site qualification and imaging charter development
- ▶ Tracer logistics and vendor coordination
- ▶ Reader training, monitoring, and review management
- ▶ Quantitative image analysis (SUV, tumor burden, dosimetry, PK)
- ▶ Real-time image QC and data transfer
- ▶ Central review and Standard of Truth panel management

Why is Perceptive Imaging the best partner to support your RPT program?

Advanced Analytics and Novel Read Criteria

- ▶ 50+ dosimetry studies supported
- ▶ 40-person advanced analytics and 10-person dosimetry teams
- ▶ Decades of experience in deploying novel read criteria and SoT Panels

Market Leader in RPT and Oncology

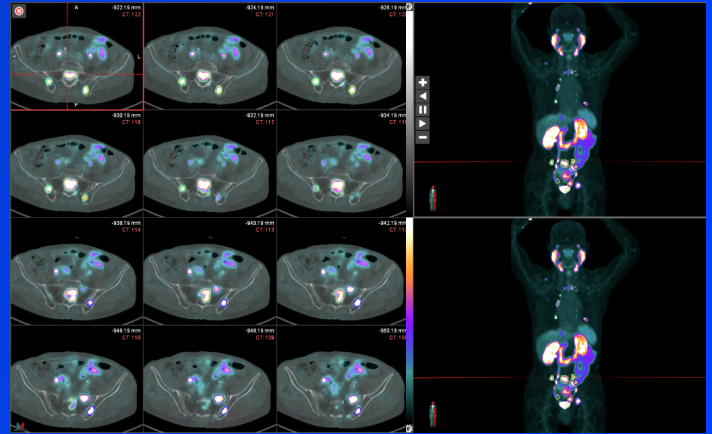
- ▶ Supporting 80% of RPT companies
- ▶ Pioneers in PSMA Imaging
- ▶ 2000+ oncology studies with 300+ oncology approvals supported (including 80+ RPT studies and 6 approvals)

2000 PET/SPECT Imaging Centers Qualified Globally

- ▶ Decades of experience with complex site set-up - sites will be set-up and trained on time
- ▶ Library of phantoms
- ▶ Training program and systems to minimize queries and harmonize data across sites

Our RLT experience includes:

INDICATIONS	NOVEL TARGETS
Breast Cancer	FAP
Gastric Cancer	DLL3
Glioblastoma	HER2
Lung Cancer	GRPR
Pancreatic Cancer	MC1R
Prostate Cancer	STEAP1
Additional Solid Tumor Indications	TROPE2



PSMA-PET and Artificial Intelligence

Perceptive is the only imaging solutions provider to date to support an FDA submission of quantitative PET data using AI. Our Automated PSMA Segmentation Tool (updated April 2025) offers increased automation, flexibility and sensitivity for faster processing times, including:

- ▶ Trained to segment both bone and soft-tissue lesions automatically, significantly reducing human processing time
- ▶ Tunable post processing to enable flexibility across different disease stages or tracers
- ▶ Post processing enables robust and dynamic thresholding, and demonstrates flexibility to treat different areas of the body differently, ex. rib lesions v. lumbar lesions

Perceptive's AI team is continuing to develop cutting edge solutions to advance imaging and image analysis across the clinical space.

Dosimetry

Through advanced image segmentation, blood and urine data analysis, and model-based dose calculations, we deliver precise radiation estimates critical to safety and efficacy assessments. Our team utilizes validated models like OLINDA and custom dosimetry tools for organ- and tumor-specific calculations, supporting dose reporting for complex radiopharmaceutical programs.

Our experience spans across radionuclides and species, and includes:

- ▶ At-211
- ▶ Lu-177
- ▶ Zr-89
- ▶ Tb-161
- ▶ Pb-212
- ▶ And more
- ▶ Ac-225
- ▶ Cu-64/67

How can we help?

To learn more about partnering with Perceptive Imaging for clinical trial success, contact:

▶ hello@perceptive.com