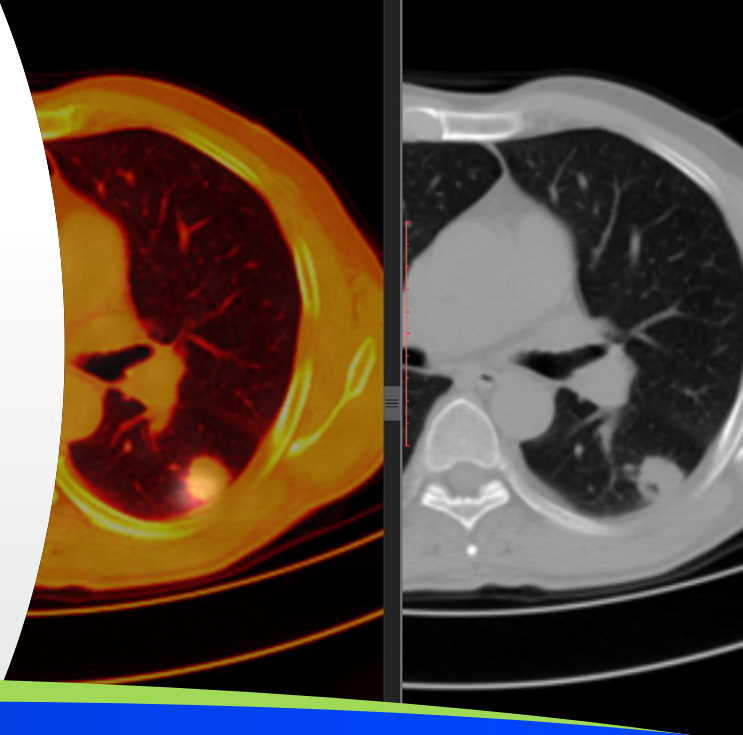


Rely on Perceptive for Solid Tumor Trial Imaging



Perceptive is a leading imaging core lab for solid tumor clinical trials, having supported over 1,800 studies and more than 270 regulatory approvals to date.

Whether your study involves RECIST, PCWG4, RANO or other oncology imaging endpoints, radioligand therapies, or complex clinical biomarker integration, our scalable oncology imaging services deliver the expertise and infrastructure needed to meet the highest data standards and regulatory rigor.

Solid Tumor Trial Imaging Expertise

We have supported all phases of solid tumor clinical development and have helped sponsors meet global regulatory expectations across both standard-of-care and advanced medical imaging. Our expertise includes, but is not limited to:

INDICATIONS	RESPONSE CRITERIA	MOLECULE TYPES	MODALITIES	ADVANCED IMAGE ANALYSIS
Lung Cancer	RECIST 1.1	Small molecules	CT	Radiomics
Breast Cancer	iRECIST	Radioligand therapies	MRI	Dosimetry
Colorectal Cancer	irRECIST	Proteins incl. ADCs	X-ray	Automated PSMA Segmentation
Prostate Cancer	iRC	Gene therapies	Bone Scan	
HCC	mRECIST	Cell therapies	PET	
Melanoma	PERCIST	Peptides	SPECT	
Ovarian Cancer	PCWG3/PCWG4	Vaccines	Mammography	
RCC	RANO variants	RNA-based therapies	Photography	
Primary Brain Tumors				

Clinical Radiopharmaceutical Services

Perceptive is the industry's most experienced imaging partner in radioligand / radiopharmaceutical therapy (RPT), supporting over 100 clinical trials and 6 approvals, as well as thousands of preclinical programs across a wide range of targets and tumor types.

We support the full lifecycle of theranostics and radioligand therapy trials — ensuring patient safety from early-phase dose optimization and biodistribution through global Phase III execution.

The Faster Path for RECIST 1.1 Start-up

RECIST 1.1 underpins the vast majority of solid tumor trials, yet significant time is spent building study charters, as well as configuring and validating read workflows. Our core RECIST 1.1 solution applies the criteria exactly as written, using pre-validated medical logic and standardized, production-ready workflows. This enables trials to be 'read-ready' in days instead of the typical weeks required for custom configuration. Most trials fit a standardized RECIST 1.1 approach, with custom options available when protocols require flexibility.

Scientific Leadership

With the right infrastructure, scientific expertise, and advanced imaging technology, we deliver high-quality imaging data that helps you bring life-saving treatments to patients in need.



Gregory Goldmacher, MD, PhD, MBA
Chief Scientific & Medical Officer



Oliver Bohnsack, MD, PhD, MBA
Vice President, Scientific and Medical Services

How can we help?

To learn more about partnering with Perceptive Imaging for solid tumor trial success, contact:

▶ hello@perceptive.com